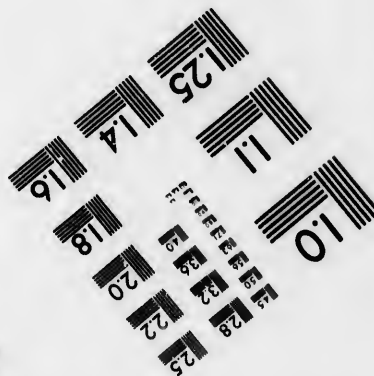
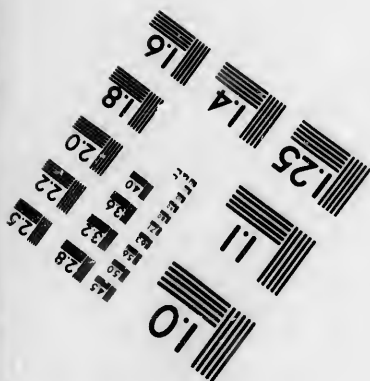
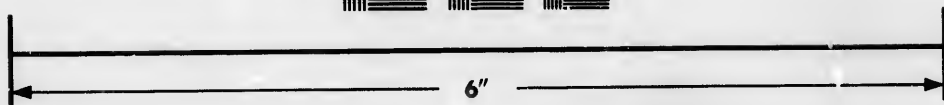
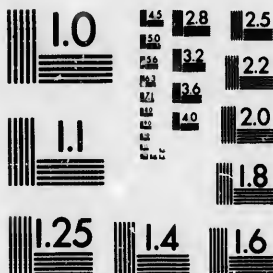


**IMAGE EVALUATION
TEST TARGET (MT-3)**



**Photographic
Sciences
Corporation**

23 WEST MAIN STREET
WEBSTER, N. Y. 14580
(716) 872-4503

**CIHM/ICMH
Microfiche
Series.**

**CIHM/ICMH
Collection de
microfiches.**



Canadian Institute for Historical Microreproductions / Institut canadien de microreproductions historiques

© 1986

Technical and Bibliographic Notes/Notes techniques et bibliographiques

The Institute has attempted to obtain the best original copy available for filming. Features of this copy which may be bibliographically unique, which may alter any of the images in the reproduction, or which may significantly change the usual method of filming, are checked below.

L'institut a microfilmé le meilleur exemplaire qu'il lui a été possible de se procurer. Les détails de cet exemplaire qui sont peut-être uniques du point de vue bibliographique, qui peuvent modifier une image reproduite, ou qui peuvent exiger une modification dans la méthode normale de filmage sont indiqués ci-dessous.

- | | |
|--|--|
| <input type="checkbox"/> Coloured covers/
Couverture de couleur | <input type="checkbox"/> Coloured pages/
Pages de couleur |
| <input type="checkbox"/> Covers damaged/
Couverture endommagée | <input type="checkbox"/> Pages damaged/
Pages endommagées |
| <input type="checkbox"/> Covers restored and/or laminated/
Couverture restaurée et/ou pelliculée | <input type="checkbox"/> Pages restored and/or laminated/
Pages restaurées et/ou pelliculées |
| <input type="checkbox"/> Cover title missing/
Le titre de couverture manque | <input type="checkbox"/> Pages discoloured, stained or foxed/
Pages décolorées, tachetées ou piquées |
| <input type="checkbox"/> Coloured maps/
Cartes géographiques en couleur | <input type="checkbox"/> Pages detached/
Pages détachées |
| <input type="checkbox"/> Coloured ink (i.e. other than blue or black)/
Encre de couleur (i.e. autre que bleue ou noire) | <input type="checkbox"/> Showthrough/
Transparence |
| <input type="checkbox"/> Coloured plates and/or illustrations/
Planches et/ou illustrations en couleur | <input type="checkbox"/> Quality of print varies/
Qualité inégale de l'impression |
| <input type="checkbox"/> Bound with other material/
Relié avec d'autres documents | <input type="checkbox"/> Includes supplementary material/
Comprend du matériel supplémentaire |
| <input type="checkbox"/> Tight binding may cause shadows or distortion
along interior margin/
La reliure serrée peut causer de l'ombre ou de la
distorsion le long de la marge intérieure | <input type="checkbox"/> Only edition available/
Seule édition disponible |
| <input type="checkbox"/> Blank leaves added during restoration may
appear within the text. Whenever possible, these
have been omitted from filming/
Il se peut que certaines pages blanches ajoutées
lors d'une restauration apparaissent dans le texte,
mais, lorsque cela était possible, ces pages n'ont
pas été filmées. | <input type="checkbox"/> Pages wholly or partially obscured by errata
slips, tissues, etc., have been refilmed to
ensure the best possible image/
Les pages totalement ou partiellement
obscurcies par un feuillet d'errata, une pelure,
etc., ont été filmées à nouveau de façon à
obtenir la meilleure image possible. |

Additional comments: / [Printed ephemera] [2] p. This copy is a photoreproduction.
Commentaires supplémentaires:

This item is filmed at the reduction ratio checked below/
Ce document est filmé au taux de réduction indiqué ci-dessous.

10X	12X	14X	16X	18X	20X	22X	24X	26X	28X	30X	32X
								/			

The copy filmed here has been reproduced thanks to the generosity of:

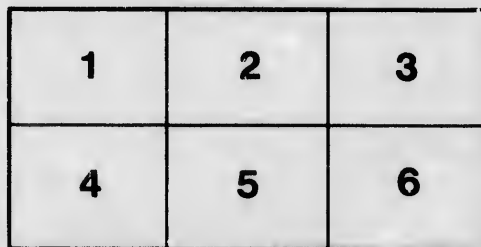
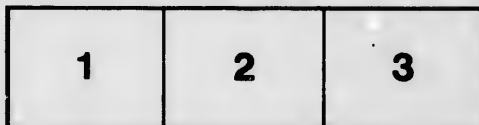
Bibliothèque nationale du Québec

The images appearing here are the best quality possible considering the condition and legibility of the original copy and in keeping with the filming contract specifications.

Original copies in printed paper covers are filmed beginning with the front cover and ending on the last page with a printed or illustrated impression, or the back cover when appropriate. All other original copies are filmed beginning on the first page with a printed or illustrated impression, and ending on the last page with a printed or illustrated impression.

The last recorded frame on each microfiche shall contain the symbol \rightarrow (meaning "CONTINUED"), or the symbol ∇ (meaning "END"), whichever applies.

Maps, plates, charts, etc., may be filmed at different reduction ratios. Those too large to be entirely included in one exposure are filmed beginning in the upper left hand corner, left to right and top to bottom, as many frames as required. The following diagrams illustrate the method:



L'exemplaire filmé fut reproduit grâce à la générosité de:

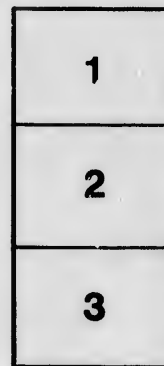
Bibliothèque nationale du Québec

Les images suivantes ont été reproduites avec la plus grande soin, compte tenu de la condition et de la netteté de l'exemplaire filmé, et en conformité avec les conditions du contrat de filmage.

Les exemplaires originaux dont la couverture en papier est imprimée sont filmés en commençant par le premier plat et en terminant soit par la dernière page qui comporte une empreinte d'impression ou d'illustration, soit par le second plat, selon le cas. Tous les autres exemplaires originaux sont filmés en commençant par la première page qui comporte une empreinte d'impression ou d'illustration et en terminant par la dernière page qui comporte une telle empreinte.

Un des symboles suivants apparaîtra sur la dernière image de chaque microfiche, selon le cas: le symbole \rightarrow signifie "A SUIVRE", le symbole ∇ signifie "FIN".

Les cartes, planches, tableaux, etc., peuvent être filmés à des taux de réduction différents. Lorsque le document est trop grand pour être reproduit en un seul cliché, il est filmé à partir de l'angle supérieur gauche, de gauche à droite, et de haut en bas, en prenant le nombre d'images nécessaire. Les diagrammes suivants illustrent la méthode.





HEAD-QUARTERS, MONTREAL,

Adjutant-General's Office, 28th July, 1814.

GENERAL ORDER.

A RELAXATION of Discipline and of Vigilance being frequently suffered to prevail among Troops, while on a March, The Commander of the Forces finds it necessary to caution Officers against allowing a mistaken indulgence to operate to the prejudice of the service. Few situations require more unremitting attention in the Officers, than the conducting Troops on route with regularity and order. His Excellency directs that the following Instructions be in future strictly observed.

The Baggage or Stores in charge of a Detachment or Corps, are to be prepared before the hour appointed for the march or embarkation, and no party on the pretence of escorting Baggage, is to remain behind.

When movements are made by Water, attention is to be paid in the distribution of the Baggage and the Crews in the Batteaux, so as to insure the Boats moving in compact order, and to avoid all unnecessary delay.

As far as practicable, the men are to embark in the same sections and order in which they are accustomed to parade; an Officer, or Sergeant (in case there are not Officers sufficient) is to be placed in charge of each Boat. The Boats of each Company are to keep together, and the Companies to preserve their relative position in Battalion:—A Boat with an Officer is to be appointed to lead, and form an advanced Guard, a second Boat is, in like manner, to constitute the rear Guard, and will prevent any from making the shore or remaining behind.

Officers are always to accompany their respective companies or divisions, and whenever they arrive at a place of halt, they are not to quit them until their party is mustered, and every necessary interior arrangement made for the accommodation of the men, the security of their arms and stores, and for the regularity of their messing; nor are they at any time to absent themselves beyond reach of being able to superintend the conduct of their men. The soldiers are not to be permitted to straggle, on any pretence. If fuel or provisions are to be sent for, an officer or non-commissioned officer is to accompany the fatigue party; and when soldiers are quartered in the houses or barns of the inhabitants, they are to conduct themselves in an orderly, peaceable manner, and are not to presume to take any wood for fuel, or provisions, or in any way to injure or destroy the property of the inhabitants; any soldier so misbehaving, is to be punished for the same, and to make due compensation to the proprietor.

The boats, baggage, or stores, are always to be arranged in the most secure manner possible for the night, and a Captain or Subaltern's guard, according to the strength of the detachment, is to be mounted at sunset, (the smallest escorts are to furnish at least one sentry) and the utmost vigilance, and every precaution, to be observed that is required for an out-piquet in face of the enemy. The Officers in command are required to use every exertion to ensure regularity and vigilance, and are held particularly responsible that their instructions are strictly adhered to.

An allowance of Spirits will be issued to Troops on a march, or in batteaux, whenever it can be procured; but as this issue is to be considered as an indulgence, and forming no part of the soldier's ration, it is to be withheld in all instances of irregular conduct, from the individuals misbehaving; and when that misconduct is not confined to a very few, this indulgence is to be withheld from the whole detachment or corps, until regularity and order is generally convinced.

The following REGULATIONS, established by the Quarter-Master-General's Department are to be strictly observed.

WHENEVER Detachments of Troops or whole Regiments are ordered to march, the Commanding Officer will, with the least possible delay, send to the Quarter-Master-General's Office, a Return of the Strength of his Corps or Detachment, specifying the proportion of Baggage or Regimental Stores purposed to be carried on the March, and will receive the requisite Route and Authority for transport carriage being provided.

He will further appoint an Officer, or Non-Commissioned Officer, (if the Detachment is under Fifty Men) to precede the March, in order to make the necessary arrangement for Quartering the Troops for the Night, and to provide Carriages for the next March, as well as to caution the Ferry-men at the different Ferries upon the line of march, of the arrival, and of the number of Troops, and quantity of Baggage they will have to cross.

To effect which, he will apply to the Captains of Sedentary Militia, stationed in the Villages, or to their Subalterns and Sergeants, when the former are distant from the halting-places, or absent.

The Militia Officers must be made acquainted with the number of Officers and Troops to be provided with Quarters. Care must be taken to prevent scattering the Troops upon too great an extent of ground; and where Barns can be had without prejudice to the Inhabitants, half or entire Companies must be placed in them, and the Company Officers lodged in the contiguous Farm Houses.

The Captain of Militia will, upon the application of the acting Quarter Master, (or Officer preceding the Troops) order for the next day, the number of Carriages allotted, and fix the Hour and Place of Rendezvous.

The extent of the March to be performed must also be made known to the Carters.

At the end of every day's march, the acting Quarter-Master will give a Cartage Certificate for the number of carts employed, to one of the cart-men, (in presence of the others)—a form of which is annexed—(No. 1.)

When there are ferries, the ferrymen must be previously directed, through the Captains of Militia, to assemble as many scows and batteaux as they can procure in the parish. If their own men are not sufficient to cross the troops, in which case the Captain of Militia will order fatigue men to work the batteaux. The officer commanding the troops will grant Certificates to the ferrymen for the number of persons, horses, and cart-loads of baggage ferried across the river; also to the Captains of Militia for the number of the men employed on fatigue, if they were required.

The Ferry Certificate will be given agreeably to the annexed form—(No. 2)

Whenever troops march with their baggage, the following proportion of Carriages will be allowed by Government.

Each Cart is to carry 600 lbs weight, and waggon 1,200.

Proportion of Carriages allowed to the troops when on march is as follows:

LOWER PROVINCE.

To the Field Officer commanding	-	-	-	1 Cart.
two ditto, not commanding	-	-	-	1
Paymaster and Surgeon	-	-	-	1
Acting Quarter-Master and Assist.-Surgeons	-	-	-	1
For every Company or Detachment, Officers included, from 25 to 50 men	-	-	-	2
every Company from 50 to 75	-	-	-	3
ditto 70 to 100 and upwards	-	-	-	4
Regimental Mess	-	-	-	2
For three day's Rations for 100 men	-	-	-	1

UPPER PROVINCE.

From 1 to 3 Field Officers	-	-	-	1 Waggon.
3 to 5 Staff Officers	-	-	-	1
a Company or Detachment, from 40 to 60 men	-	-	-	1
ditto Officers included, from 60 to 100	-	-	-	2
Regimental Mess	-	-	-	1
For 3 day's Rations for 150 men	-	-	-	1

These proportions being considered adequate, whatever Baggage cannot be contained in the above allotted number of carriages, must be conveyed at the expences of the regiment.

Whenever provisions and baggage is carried in Batteaux, and the troops ordered to proceed by land, two carts will be allowed for the light baggage of Field-Officers and Staff of a regiment, or wing of a regiment.

One Cart for every Division not exceeding 120 men, Officers included.

Two Cart. for a Division exceeding 120 men; and half that allowance when marching in the Upper Province.

When Troops march in batteaux, one batteau is calculated to contain 25 men including provisions and baggage.

Whenever Troops receive in their halting place, a supply of wood to cook their Provisions, the issue must be made in a regular manner, and Receipt given to the Captain of Militia for the quantity received, which receipt will be sent to the Barrack Department and the amount charged against the Regiment's fuel.

The Soldiers when embarked in batteaux are required to assist the batteaux men; and the number of men required to pull the oars are to be regularly released.

The Troops when on a march will carry their Knapsacks and Great-Coats; the Blankets will be conveyed in the carriages allotted to each Company.

Commissariat Depôts being established at Military Stations, from distance to distance; the Troops will be provided for the number of day's Rations which will serve them, to reach the next Military Station, when they will receive fresh supplies.

(No. 1) FORM OF CARTAGE CERTIFICATE

No. of Carts employed by.....Regt. from.....
To.....certified to have been performed by.....and others
date.....

Signed.....
Commanding

(No. 2) FORM OF FERRY CERTIFICATE.

Ferriage between.....and.....
No. of Persons..... } For the.....
No. of Horses..... } Regiment.....
No. of Cart loads of Baggage..... }
date.....

Signed.....
Commanding

EDWARD BAYNES, Adjutant-General, N. A.

